

**HUDSON COMMUNITY SCHOOL DISTRICT  
CERTIFIED ENROLLMENT FOR THE 2017-2018 SCHOOL YEAR  
AND  
FIVE YEAR ENROLLMENT PROJECTIONS**

**Prepared by Dr. Anthony D. Voss, Superintendent**



**October 15, 2017**

### Executive Summary

Certified enrollment in Hudson is up 13 students since 2016-2017, and up 9 students over the last five years. The number of students served in the district, or BEDS number has increased 4%, for a net increase of 28 students. Hudson served 692 students last year, compared to 720 this year. Our other metric of note is the opening day enrollment for the district, which was 722.

The number of resident students served has increased from 612.2 last year to 632 this year, a 20 student swing to the positive. Additionally, the number of students served out has decreased by 6; from 53 to 47. At the same time, the number of open enrolled students into Hudson has increased by 9, from 83 to 92. All of this bodes well for the district.

We had 45 students that were enrolled last year, but have subsequently transferred out or moved to another school district. This would be indicative of a more transient population of learners. It is also noteworthy that in the window of enrollment certification, we have had no less than 8 students enroll in the district, with another 3 projected to enroll in the next week. However, since these students were not in the district on the official Count Day of October 2<sup>nd</sup>, the district will not receive funding for these pupils.

Open enrollment into the district is net positive, with a gain of 47 students. 92 students are open enrolled into Hudson while 45 are open enrolled out. Of those 45 that are open enrolled out, 38 of them are open enrolled to Cedar Falls. Further, I think it is noteworthy that of those 38, 25 had addresses of 700 West Ridgeway at the time of original application. Of the remaining students, they are spread out among Dunkerton, Gladbrook-Reinbeck, Clayton Ridge (Online Academy), and Waterloo. The majority of students enrolling into Hudson come from Waterloo (39). This is followed by Gladbrook-Reinbeck (27) and Union (10). The balance of students comes from (in order): Cedar Falls, Dike-New Hartford, Grundy Center, Janesville, and North Tama.

To project future enrollment(s) we utilize the cohort methodology, which assumes no attrition from one grade level to another. To calculate our kindergarten enrollment, a five year rolling average is employed. Over the last five years, kindergarten enrollment has average 54 students; while in the last 10 years have averaged 55. Since the greatest unknown variable in our projections is kindergarten this seems to be a reasonable benchmark. With the cohort methodology, estimates are set at the preceding grade level as static since there is no algorithm with which to accurately project transfers in and out of the district. Therefore, if these projections hold steady, our current projections indicate a gradual increase of students to 747 in the 2020-2021 school year before declining to 727 in 2022-2023.

However, we would be remiss if not to mention the projected growth in population in the City of Hudson. Those metrics are not factored into any of these equations. Because of this, it would be a fair argument to suggest these growth projections are understated. Case in point: our previous model suggested the 2020-2021 enrollment being at 737, while our new model illustrates a 10 student swing. Currently the second addition of Upper Ridges is being developed, which will add approximately 26 single family homes, an apartment complex with approximately 48 units is also under construction, and finally, the Twin Oaks development located at the intersection of Rancho and Butterfield Road is expected to bring approximately 67 single family homes.

	06-07 Resident	06-07 OE in	Total	07-08 Resident	07-08 OE in	Total	08-09 Resident	08-09 OE in	Total	09-10 Resident	09-10 OE in	Total	10-11 Resident	10-11 OE in	Total	11-12 Resident	11-12 OE in	Total	12-13 Resident	12-13 OE in	Total	13-14 Resident	13-14 OE in	Total	14-15 Resident	14-15 OE in	Total	15-16 Resident	15-16 OE in	Total	16-17 Resident	16-17 OE in	Total	17-18 Resident	17-18 OE in	Total
K	38	5	43	33	10	43	55	8	63	50+1	8	59	44	7	51	49	3	52	52	7	59	57	4	61	46	3	49	45	4	49	50	6	56	48	6	54
1	42	6	48	37	5	42	35	8	43	48	10	58	49	5	54	48	4	52	60	4	64	52	9	61	54	6	60	52	4	56	41	5	46	48	8	56
2	33	9	42	43	5	48	39	6	45	49	8	48	47	10	57	49	5	54	44	8	52	58	4	62	54	9	63	54	6	60	54	5	59	43	4	47
3	43	7	50	34	8	42	44	5	49	41	4	45	41	7	48	52	9	61	48	6	54	39	9	48	57	6	63	57	8	65	54	4	58	57	8	65
4	50	8	58	48	5	53	30	9	39	46	4	50	42	5	47	41	6	47	56	7	63	49	7	56	39	8	47	58	5	63	55	5	60	50	4	54
EL SUB	206	35	241	195	33	228	203	36	239	225+1	34+1	261	223	34	257	229	31	260	260	32	292	255	33	288	250	32	282	266	27	293	254	25	279	246	30	276
5	45	9	54	52	7	59	50	4	54	32	8	40	51	3	54	42	5	47	45	7	52	53	13	66	49	8	57	39	7	46	59	4	63	59	7	66
6	48	9	57	46	9	55	51	9	60	56	4	60	27	7	34	51	4	55	45	5	50	44	7	51	53	12	65	51	8	59	40	8	48	60	3	63
7	58	15	73	48	8	56	49	7	56	59	10	69	56	5	61	31	7	38	46	7	53	39	7	46	43	7	50	57	8	65	51	7	58	43	9	52
8	57	12	69	57	17	74	48	7	55	51	8	59	51	9	60	56	5	61	31	8	39	45	8	53	39	5	44	44	7	51	57	9	66	55	7	62
MS SUB	208	45	253	203	41	244	198	27	225	189	30	219	185	24	209	180	21	201	167	27	194	181	35	216	184	32	216	191	30	221	207	28	235	217	26	243
9	59	11	70	59	8	67	60	14	74	46	8	54	50	8	58	50	9	59	52	9	61	31	9	40	41	7	48	39	5	44	39	8	47	55	11	66
10	65	17	82	55	13	68	54	10	64	57	16	73	47	8	55	56	9	65	49	9	58	52	8	60	29	9	38	40	7	47	40	8	48	39	10	49
11	60	12	72	64	17	81	56	11	67	58	8	66	62	15	77	47	8	55	57	9	66	47	13	60	59	9	59	28	6	36	43	5	46	36	7	43
12	59	11	70	53	11	64	63	17	80	55	10	65	56	8	64	56	16	72	47	9	56	53	8	61	48	12	69	59	9	59	25	8	33	38	8	43
HS SUB	243	51	294	231	49	280	233	52	285	216	42	258	215	39	254	209	42	251	205	36	241	183	38	221	168	37	205	157	29	186	147	29	176	165	36	201
Sub Total K-12	657	131	788	629	123	752	634	115	749	630+1	106+1	738	623	97	720	618	94	712	632	95	727	619	106	725	602	101	703	614	86	700	608	82	690	628	92	720
<b>Add for C.E.</b>																																				
S. E. Tuition Out	13			10			10			2+6			4						5			6			7			8			5			4		
O. E. Tuition Out	44			49			34			49			49			44			46			46			43			48			48			45		
Home School	0.1			0.1			0			0			0			2			9			2			0.22			2			4			3		
Pre School S.E.																																				
Certified Enrollment*	714.1			688.1			678			678			667.25			664			692			671			652			679.22			667			680		
SWPP																																				
Certified Enrollment*	714.1			688.1			678			678			667.25			664			692			671			652			679.22			667			680		
Shared Students	3.54			8.1			6.93			5.7			0			0			2			2			0			55			55			55		
RL	1.98			0.44			0.66			0			0.66			1.32			1.1			1.1			1.98			0			0			0		
O. E. Tuition In	131			123			115			107			97			94			95			106			102			86			82			82		
Tuitioned In/out OE	3			1			1			1			1			2			2			2			1			1			1			1		
Minor SE and OE out	-57.1			-59.1			-43			-48			-44			-44			-51			-52			-50			-63.22			-55			-55		
<b>Students Served</b>	<b>796.52</b>			<b>761.54</b>			<b>758.59</b>			<b>743.74</b>			<b>724.91</b>			<b>716.66</b>			<b>739.32</b>			<b>730.1</b>			<b>708.98</b>			<b>702</b>			<b>695</b>			<b>723</b>		
Teacher FTE	54.48			50.14			49.78			50.78			49.975			46.5			49.375			51.75			54.5			53.875			54.125					

**Hudson Community Schools  
Headcount**

Enrollment History														
	K	1	2	3	4	5	6	7	8	9	10	11	12	TOTAL
2006-2007	43	48	42	50	58	54	57	73	69	70	82	72	70	788
2007-2008	43	42	48	42	53	59	55	56	74	67	68	81	64	752
2008-2009	63	43	45	49	39	54	60	56	55	74	64	67	80	749
2009-2010	59	58	48	45	50	40	60	60	59	54	73	66	65	737
2010-2011	51	55	57	48	47	54	34	61	60	58	55	77	64	721
2011-2012	52	46	54	61	47	47	55	38	61	59	65	55	72	712
2012-2013	59	64	52	54	63	52	50	53	39	61	58	66	56	727
2013-2014	61	61	62	48	56	66	51	46	53	40	60	60	61	725
2014-2015	50	60	63	63	47	57	65	50	44	48	38	60	60	705
2015-2016	49	56	60	65	63	46	59	65	51	44	47	36	59	700
2016-2017	56	46	59	58	60	63	48	58	66	48	48	48	34	692
2017-2018	54	56	47	65	54	66	63	52	62	66	49	43	43	720
2018-2019	54	54	56	47	65	54	66	63	52	62	66	49	43	731
2019-2020	54	54	54	56	47	65	54	66	63	52	62	66	49	742
2020-2021	54	54	54	54	56	47	65	54	66	63	52	62	66	747
2021-2022	54	54	54	54	54	56	47	65	54	66	63	52	62	735
2022-2023	54	54	54	54	54	54	56	47	65	54	66	63	52	727

Proj. Increase  
4%  
2%  
2%  
1%  
-2%  
-1%

Open Enroll Into Hudson								
	CF	GR	NT	Union	Waterloo	Pburg	Dike	Other
2006-2007	11	23	2	17	76	2	1	0
2007-2008	14	28	2	12	63	2	2	0
2008-2009	8	26	2	14	61	2	2	0
2009-2010	11	26	2	12	51	2	3	0
2010-2011	9	23	3	12	46	2	1	1
2011-2012	11	21	2	11	43	2	3	1
2012-2013	14	19	2	9	45	2	3	1
2013-2014	14	18	1	11	53	1	5	4
2014-2015	17	22	1	7	45	0	5	4
2015-2016	11	20	1	8	40	0	4	2
2016-2017	12	26	1	8	30	0	4	1
2017-2018	9	27	1	10	39	0	4	2

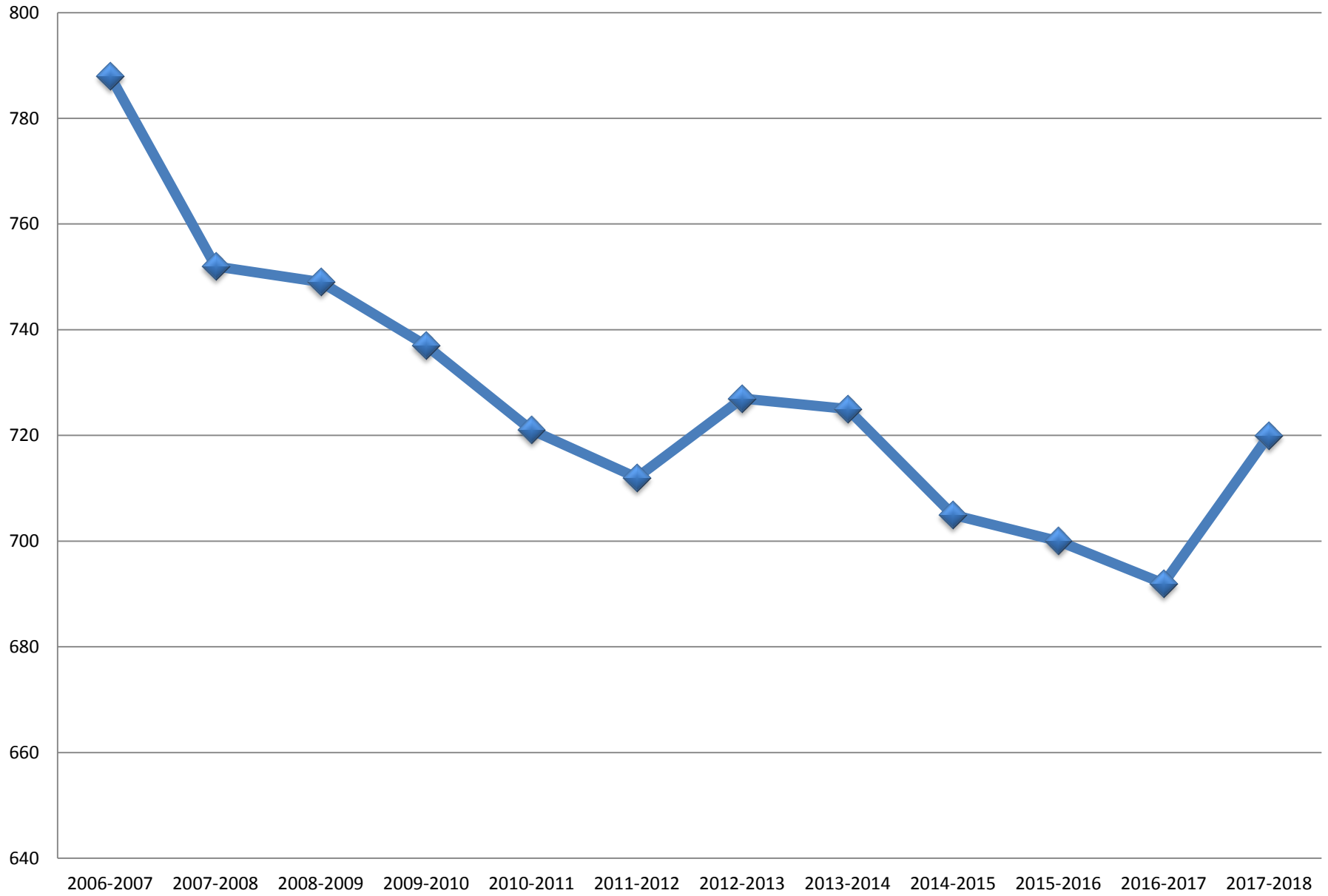
Open Enroll Out of Hudson								
	CF	GR	NT	Union	Waterloo	Pburg	Dike	Other
2006-2007	18	0	0	2	8	0	1	8
2007-2008	30	1	0	0	12	0	0	1
2008-2009	26	0	0	0	5	0	0	0
2009-2010	33	2	0	0	3	0	0	2
2010-2011	32	0	0	0	7	0	0	1
2011-2012	40	0	0	0	4	0	0	2
2012-2013	40	0	0	0	6	0	0	1
2013-2014	38	0	0	0	5	0	2	1
2014-2015	38	0	0	0	4	0	0	1
2015-2016	46	1	1	0	3	0	1	3
2016-2017	43	1	1	0	2	0	0	1
2017-2018	38	3	0	0	2	0	0	2

Elementary Totals	Year	Headcount
	2006-2007	241
	2007-2008	228
	2008-2009	239
	2009-2010	260
	2010-2011	258
	2011-2012	260
	2012-2013	292
	2013-2014	288
	2014-2015	283
	2015-2016	293
	2016-2017	279
	2017-2018	276

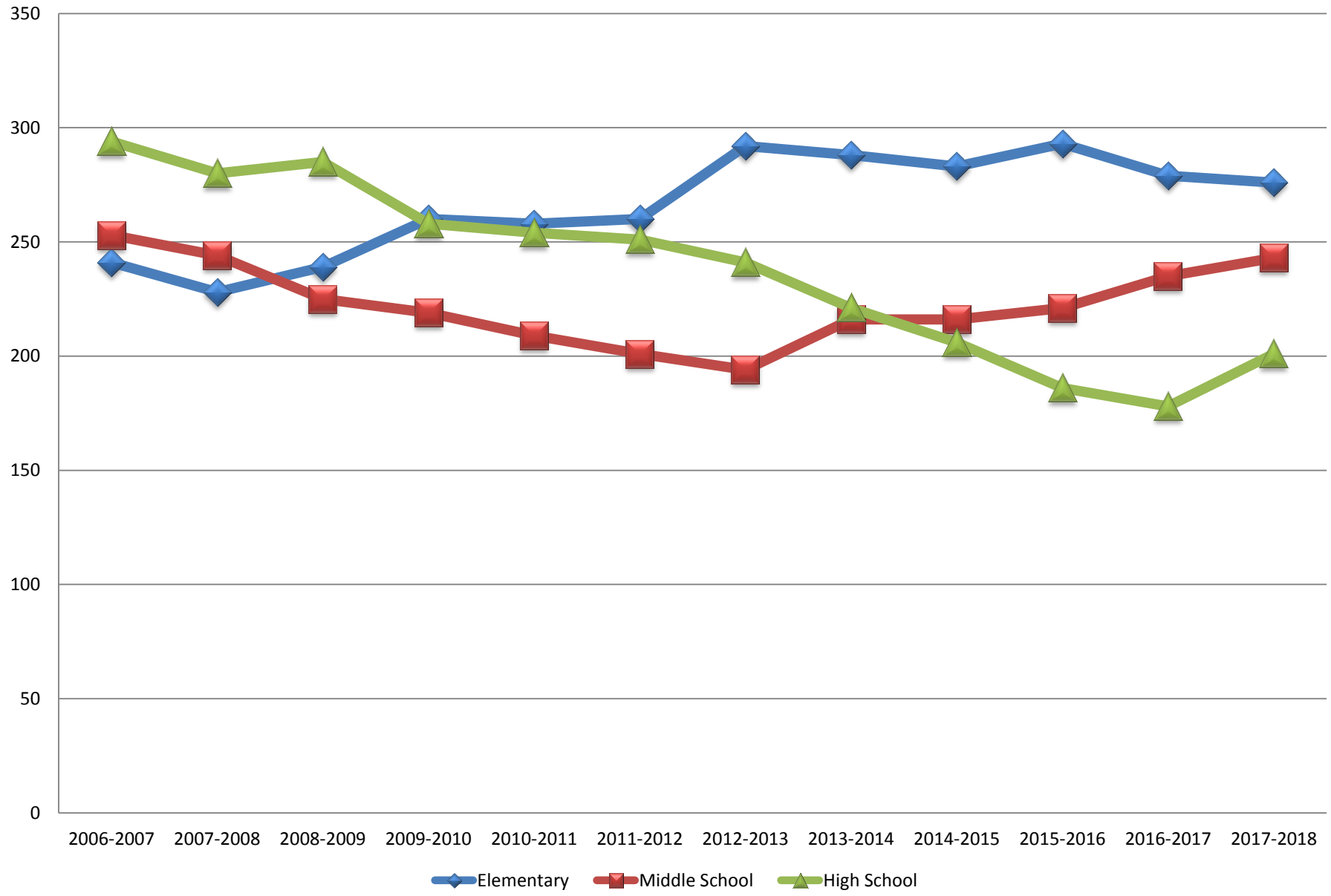
Middle School Totals	Year	Headcount
	2006-2007	253
	2007-2008	244
	2008-2009	225
	2009-2010	219
	2010-2011	209
	2011-2012	201
	2012-2013	194
	2013-2014	216
	2014-2015	216
	2015-2016	221
	2016-2017	235
	2017-2018	243

High School Totals	Year	Headcount
	2006-2007	294
	2007-2008	280
	2008-2009	285
	2009-2010	258
	2010-2011	254
	2011-2012	251
	2012-2013	241
	2013-2014	221
	2014-2015	206
	2015-2016	186
	2016-2017	178
	2017-2018	201

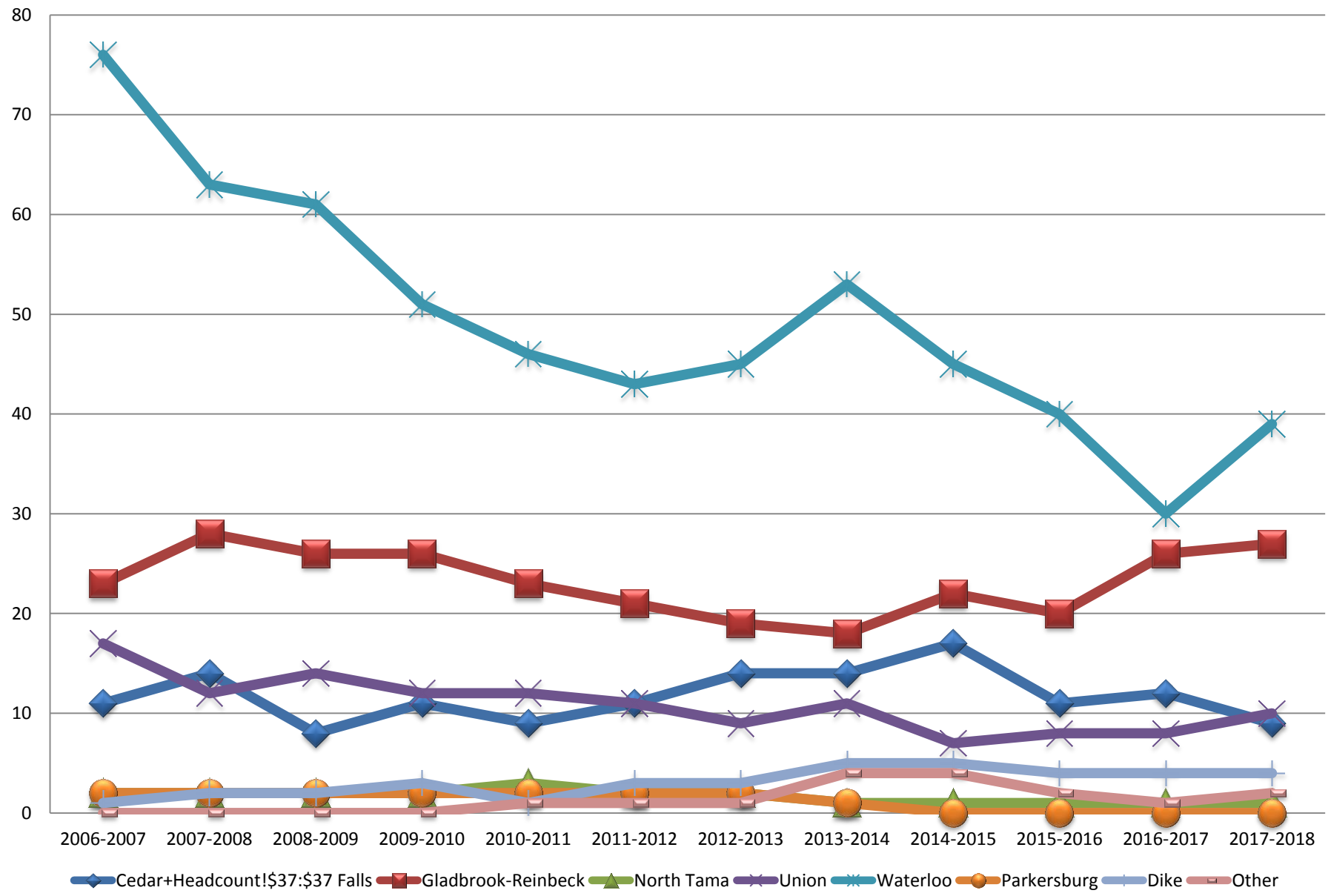
## District Enrollment Trend



# Enrollment Trend By Building



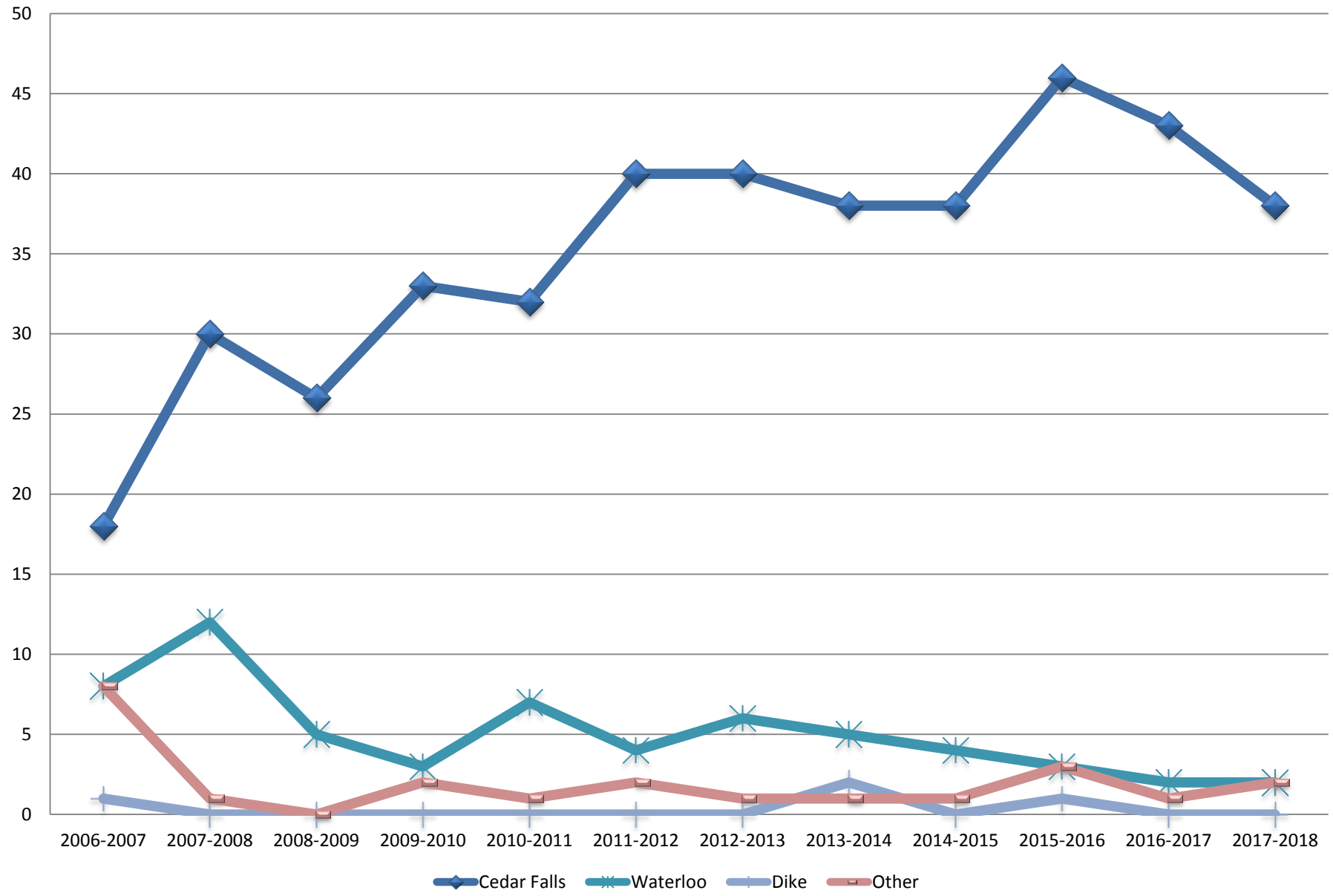
## Open Enroll Into Hudson







# Open Enroll Out of Hudson



Certified Enrollment

2008-2009	678	
2009-2010	678	
2010-2011	667	
2011-2012	664	-3
2012-2013	692	28
2013-2014	671	-21
2014-2015	652	-19
2015-2016	679.22	27
2016-2017	667	-12
2017-2018	680	13
Change in five years		9

